



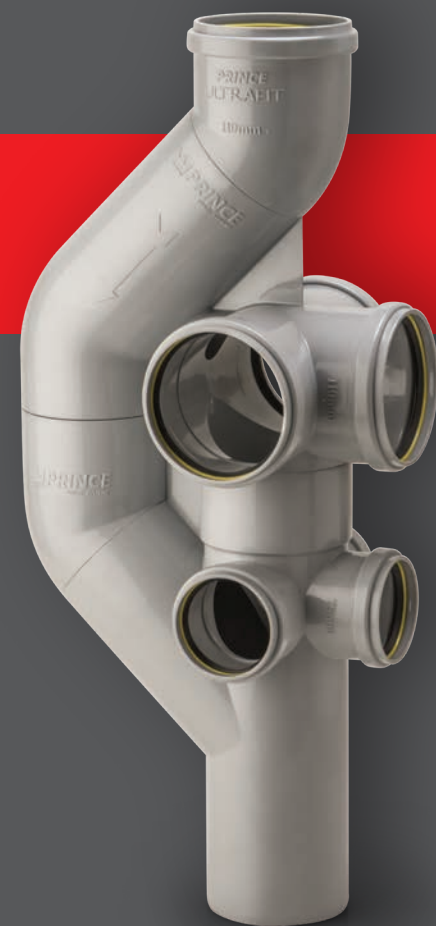
**Corporate Office**  
**PRINCE PIPES AND FITTINGS LTD.**  
 The Ruby, 8th Floor, 29, Senapati Bapat Marg (Tulsi Pipe Road),  
 Dadar (West), Mumbai - 400 028, India.

**Toll Free: 1800 267 7555 | Fax: +91 22 6602 2220**

[www.princepipes.com](http://www.princepipes.com)
[info@princepipes.com](mailto:info@princepipes.com)
[/princepipesofficial](https://www.facebook.com/princepipesofficial)
[/Prince\\_Pipes](https://twitter.com/Prince_Pipes)
[/Prince Pipes Official](https://www.youtube.com/PrincePipesOfficial)

PPF/Aerator Leaflet/E/Rev. No.02/August 2019  
 Printed in August 2019

**ULTRAFIT™**  
 SWR Systems  
 with world class seals



# AERATOR

FOR HIGH-RISE BUILDINGS

SOLVENT JOINT | RUBBER RING JOINT  
 FOR SINGLE STACK SYSTEM



Approved by  
 Brihanmumbai Municipal  
 Corporation

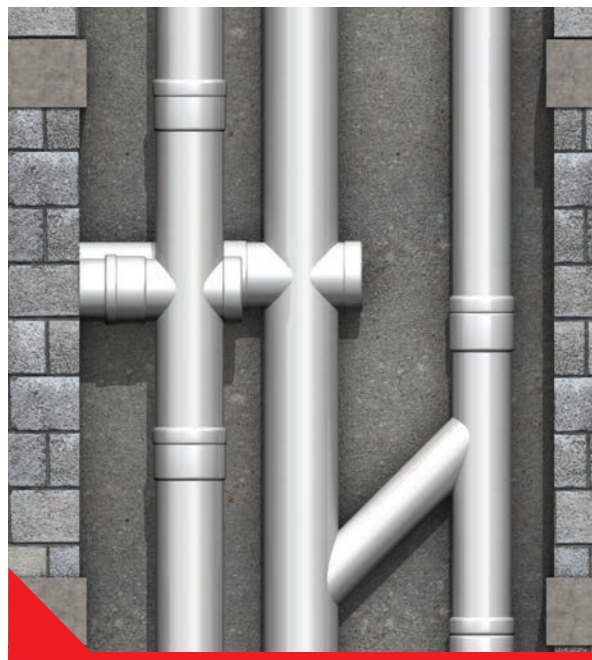


# AERATOR

## Making SWR Systems Zero Defect

Introducing Aerator, a new product from the Prince Ultrafit family. It is a new age solution for SWR systems in multi-storey buildings. It combines 3 separate lines of soil, waste & vent into one single line and it prevents hydraulic plug formation in soil waste drainage system of high rise buildings by reducing the velocity of soil and waste drainage by providing the path for air venting. The engineered design is meant to offer an economical & high performance alternative to conventional drainage system. Moreover, a single Aerator provides up to 6 connection options at any floor level thereby giving you significant cost savings in terms of reduced piping work & associated construction.

### COMPARISON BETWEEN 3 STACK SYSTEM VS SINGLE STACK AERATOR SYSTEM



VS



#### 3 STACK SYSTEM

- Wide duct space required which reduces the floor carpet area.
- Use of more material to build up the system.
- Longer execution time.

#### AERATOR SYSTEM

- Saves duct space, giving more carpet area to builders.
- Less material required.
- Less execution time.

### RECOMMENDED DISTANCE BETWEEN 2 AERATORS

- It should be planned on each floor with maximum distance of 6 meters.

### APPLICATION

- High-rise buildings / Multi-storey buildings
- Hotels

### INSTALLATION PER FLOOR

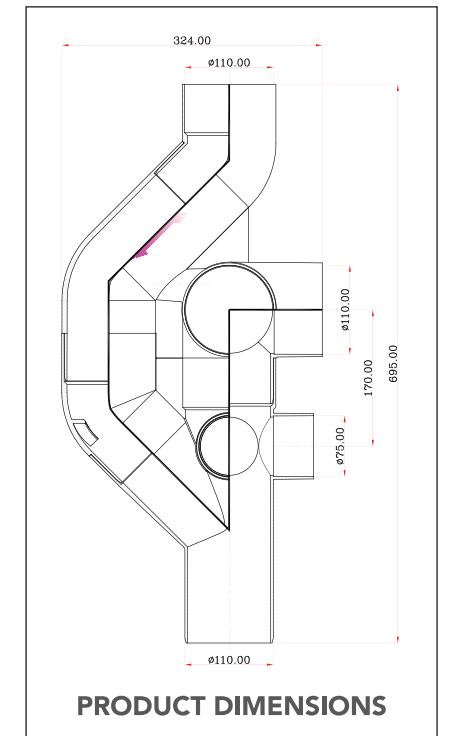
- It should be planned on each floor with maximum distance of 6 meters between them.

## Size of Product

- 110 mm

### BENEFITS

- Effective for handling pressure created by gas (pneumatic) & waste water (hydraulic).
- Multiple joint possibility, offers 6 connection options with 3 outlets of 110mm for soil waste & 3 outlets of 75mm for liquid waste.
- Saves space, material & reduces joints.
- No separate ventilation pipes required.
- Works as velocity reducer in every floor & controls the flow.
- Protects the Trap seal in sanitary system which maintains the hygiene of your bathrooms & toilets.
- Easy to install.



## Types of Aerator

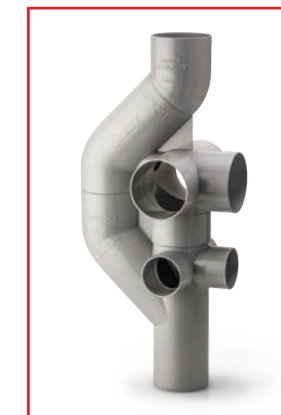
Prince Piping systems provides 3 types of Aerator which have their own benefits & offers a choice to the user. These are as mentioned below:

### RUBBER RING JOINT



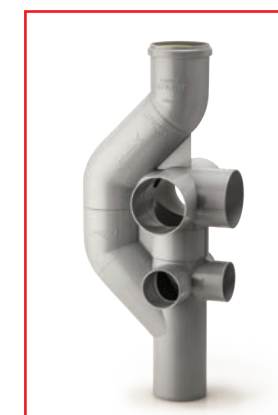
These types of joints are demountable & in case of any replacement in the system, it can be easily done without replacing the entire system. These are available with world class seals that ensure leak proof joints.

### SOLVENT JOINT



This advanced Solvent Joint provides long lasting solution for leak proof operation. Tailor made to have a long shelf life, they have been crafted for areas that require permanent fixtures.

### RUBBER & SOLVENT JOINT



Prince Pipes is the only company which provides this combination of RR & Solvent joint into one. The top end of the fitting is rubber ring joint while rest of the inlets of 110 mm & 75 mm are solvent joint.

### BENEFITS

- It helps replace the 110mm pipe connected to the Aerator.
- If less than 6 connections are required, the unused/unjoint inlets can be closed with the help of socket plugs and solvent joints.